



Parts and Accessories

For Protective Coatings High-Pressure Equipment



PROVEN QUALITY. LEADING TECHNOLOGY.

Table of Contents:

Airless Spray Guns	Page 4 - 5
Gun Tips and Guards	Page 6 - 7
Hoses	Page 8 - 9
Pump Lowers	Page 10
Packings	Page 11
Repair Parts and Accessories	Page 12 - 15





Don't risk your reputation with anything less

It's happened before: A critical piece of equipment meets an unfortunate end due to the failure of one, tiny component. That's why Graco doesn't build just any off-the-shelf part into its equipment. We select and manufacture high quality components our customers have come to rely on. Our equipment is superior because its parts are superior – in design, quality and performance.

Designed, tested and built for reliability

Great design is in the details. At Graco, our engineering team designs and specifies every part that is built into our machines. We test and re-test our parts to make sure they provide you with outstanding performance, long life and durability. You can't afford your equipment to fail in the field. As the trusted brand you rely on, neither can we.

Each quality part is dependent on another

Graco equipment is designed as a unified system, not as a collection of stand-alone parts. Every part is designed with a careful eye toward the parts it will interact with, and adjusted accordingly. When any of a system's parts is replaced with a lower quality, non-Graco part, the result may be a ripple effect that degrades not only its own functionality, but that of other parts throughout the system.

Protect your business with genuine Graco parts

When you need replacement parts, you could purchase cheaper alternatives. But why risk it? Off-the-shelf parts may hinder performance and possibly even damage your Graco equipment. You invest in Graco equipment because it is superior quality. It's what your business depends on. So protect your investment and your future. Trust only genuine Graco parts.

Airless Spray Guns

XTR-5 and XTR-7 Guns - Lightweight and ergonomic

While they are lightweight and comfortable to use, Graco's XTR™ guns can handle the toughest coatings and perform in the most extreme spray conditions. All our airless spray guns are made with pride and built to exacting standards in our Sioux Falls, South Dakota, U.S.A. manufacturing facility.

XTR-5: Maximum working pressure of 5000 psi (345 bar, 34.5 MPa)

XTR-7: Maximum working pressure of 7250 psi (500 bar, 50.0 MPa)

Needle Assembly and XHD™ Reverse-A-Clean (RAC)® SwitchTip™

- Exceptional life, pattern and finish
- Great for high solids coatings
- Factory-set needle needs no adjustment

Variety of Handle and Trigger Options

- 2- and 4-finger trigger options
- Oval-insulated or round handle
- Lightweight trigger pull

Easy Out™ Gun Filter

- Reduces tip plugs
- Eliminates collapsed filters
- Provides more filtration area

Trigger Guard

- Easily detaches for access to filter
 - Acts as a wrench to remove filter from gun handle
- Small profiles spray in tight areas

EasyGlide™ Swivel

- Allows easier gun movement under high pressure



Ordering Information

XTR-5 Airless Spray Guns

Maximum working pressure: 5000 psi (345 bar, 34.5 MPa)

XTR500	One inch round handle, four-finger trigger, no tip
XTR501	One inch round handle, four-finger trigger, 519 flat tip
XTR502	Oval-insulated handle, four-finger trigger, 519 XHD RAC tip
XTR503	Oval-insulated handle, two-finger trigger, 519 XHD RAC tip
XTR504	One inch round handle, four-finger trigger, 519 XHD RAC tip
XTR505	One inch round handle, two-finger trigger, 519 XHD RAC tip

XTR-7 Airless Spray Guns

Maximum working pressure: 7250 psi (500 bar, 50.0 MPa)

XTR700	Round handle, four-finger trigger, no tip
XTR701	Round handle, four-finger trigger, 519 flat tip
XTR702	Oval-insulated handle, four-finger trigger, 519 XHD RAC tip
XTR703	Oval-insulated handle, two-finger trigger, 519 XHD RAC tip
XTR704	Round handle, four-finger trigger, 519 XHD RAC tip
XTR705	Round handle, two-finger trigger, 519 XHD RAC tip

XHF™ Gun - Rugged and capable

Graco's XHF gun is designed for high-flow, high-pressure applications. It handles the most demanding high-viscosity, protective coatings, including epoxy intumescent coatings and fiber-filled materials.

Maximum working pressure of 7250 psi (500 bar, 50 MPa)



Heavy Fluid Needle

- Maximize uptime
- No spring in fluid path

Front-entry Fluid Housing

- Designed to avoid plugging with fibrous or heavily filled materials
- High pressure
- High flow and high production

Four-finger Trigger with Safety Lock

- Contoured for comfort

Ergonomic Gun Body

- Lightweight forged aluminum
- Form-fitted handle for less fatigue

Ordering Information

XHF Airless Spray Gun

262854 XHF Gun, includes XHD 429 tip

Gun Accessories for XTR and XHF Guns

237260 XHF Gun repair kit
246294 10 in (254 mm) Gun Extension, 7250 psi (500 bar, 50 MPa)
246295 15 in (380 mm) Gun Extension, 7250 psi (500 bar, 50 MPa)
246296 18 in (457 mm) Gun Extension, 7250 psi (500 bar, 50 MPa)
246297 180° spray nozzle, 7/8-14 UNC-2B, 7250 psi (500 bar, 50 MPa)
24P834 Gun swivel, 1/2 in f x 3/8 npsm, PTFE packing, 6500 psi (448 bar, 44.8 MPa)
248837 Gun Repair Kit, Includes Gasket, Needle and Seat

287449 Four-finger Round Trigger Kit
287450 Two-finger Trigger Kit
287451 Four-finger Oval Insulation Trigger Kit
287032 Filter, 60 Mesh
287033 Filter, 100 Mesh
287034 Filter, 60 and 100 Mesh Combination
247634 Seal kit, GHD conversion (5-pack)

Gun Tips and Guards

Individually tested for quality and safety

Graco XHD™ Reverse-A-Clean® (RAC) SwitchTips are specifically designed and individually tested for spraying high-solids coatings at high pressures up to 7250 psi (500 bar), while still optimizing the specified spray pattern. All spray tips are manufactured in Sioux Falls, South Dakota, U.S.A. and individually tested before leaving the facility.

XHD RAC SwitchTip™ and Guard

- SwitchTip – Minimize downtime by changing tip sizes in seconds without removing tip guard and housing
- Save time by not having to use a screwdriver to remove the tip
- Locking tab ensures tip stays securely in guard
- High quality carbide lasts longer
- Designed to easily clear clogs



Ordering Information

Graco XHD Guards

XHD001 7/8 in (22.22 mm) aluminum thread, compatible with Graco XTR guns
 XHD003 7/8 in (22.22 mm) stainless steel thread, hand-tightened, compatible with Graco XTR guns
 XHD005 11/16 in (17.46 mm) aluminum thread, adaptable with non-Graco guns
 Use only XHD seals with Graco Guards, XHD010

XHD Tips

Complete your XHD tip part number using the numbers in the charts below.
 For example: for a tip with .025 orifice and 10 in (254 mm) pattern, order XHD525

ORIFICE SIZE - INCHES

FAN WIDTH	IN	(MM)	.007	.009	.011	.013	.015	.017	.019	.021	.023	.025	.027	.029	.031	.033	.035	.037	.039
	2-4	(51-102)	107	109	111	113	115	117	119	121									139
	4-6	(102-152)		209	211	213	215	217	219	221		225	227	229	231		235		239
	6-8	(152-203)	307	309	311	313	315	317	319	321	323	325	327	329	331	333	335	337	339
	8-10	(203-254)		409	411	413	415	417	419	421	423	425	427	429	431	433	435	437	439
	10-12	(254-305)		509	511	513	515	517	519	521	523	525	527	529	531	533	535	537	539
	12-14	(305-356)		609	611	613	615	617	619	621	623	625	627	629	631	633	635	637	639
	14-16	(356-406)			711	713	715	717	719	721	723	725	727	729	731	733	735	737	739
	16-18	(406-457)				813	815	817	819	821	823	825	827	829	831	833	835	837	839
	18-20	(457-508)									923		927		931	933	935	937	939
Flow Rate (gpm)			.05	.09	.12	.18	.24	.31	.38	.47	.57	.67	.74	.90	1.03	1.17	1.31	1.47	1.63
Flow Rate (lpm)			.20	.33	.49	.69	.91	1.17	1.47	1.79	2.15	2.54	2.96	3.42	3.90	4.42	4.98	5.56	6.18

Water @ 2000 psi (138 bar, 13.8 MPa) - paints with a higher viscosity will decrease the flow rate.



ORIFICE SIZE - INCHES

FAN WIDTH	IN	(MM)	.041	.043	.045	.047	.049	.051	.053	.055	.057	.059	.061	.063	.065	.067	.069	.071	.075	.081
	2-4	(51-102)																		
	4-6	(102-152)																		
	6-8	(152-203)	341	343	345	347		351		355										
	8-10	(203-254)	441	443	445	447	449	451		455		459	461	463	465	467		471	475	481
	10-12	(254-305)	541	543	545	547	549	551	553	555	557		561		565	567		571	575	
	12-14	(305-356)	641	643	645	647	649	651		655	657	659	661	663	665	667	669	671	675	
	14-16	(356-406)	741	743		747	749	751	753	755			761			767		771		
	16-18	(406-457)	841	843		847		851		855			861	863		867				
	18-20	(457-508)																		
	Flow Rate (gpm)		1.8	1.98	2.17	2.37	2.58	2.79	4.26	3.25	3.49	3.74	4.0	4.26	4.53	4.82	5.11	5.41	6.04	7.04
	Flow Rate (lpm)		6.83	7.51	8.23	8.98	9.76	10.57	16.13	12.29	13.20	14.14	15.12	16.13	17.17	18.24	19.34	20.48	22.85	26.66

Xtreme-Duty™ High-Pressure Hoses – Built to take a beating

Graco Xtreme-Duty high-pressure hoses are flexible and durable, yet extremely easy to use. Because hoses take a beating on the jobsite, Graco puts its hoses through a unique safety testing regimen in our state-of-the-art manufacturing facility. Each hose design undergoes **impulse, burst, flexibility** and **cold bend testing** to give you top quality, durability and reliable performance. Xtreme-Duty hoses are available in different lengths, diameters, and three different pressure ratings.

The length and diameter of hose you use affects the pressure drop of fluid to the spray gun. A longer hose has a greater pressure drop. A smaller hose diameter has greater pressure drop. If using two different diameter hoses coupled together, attach the larger diameter hose to the pump and the smaller hose to the gun to minimize pressure drop.



Designed for durability

- Chemical-resistant hose cover withstands a variety of solvents, acids and bases
- Cover stands up to sunlight, ozone, oxygen and extreme weather conditions
- Color-coded by pressure to take the guesswork out of using the right hose

Ordering Information

Xtreme-Duty 4500 psi (310 bar)			
Part #	Length	Hose Diameter	Female NPSM
H42503	3 ft (0.9 m)	1/4 in (6.4 mm)	1/4 in
H42506	6 ft (1.8 m)	1/4 in (6.4 mm)	1/4 in
H42510	10 ft (3.0 m)	1/4 in (6.4 mm)	1/4 in
H42525	25 ft (7.6 m)	1/4 in (6.4 mm)	1/4 in
H42550	50 ft (15.2 m)	1/4 in (6.4 mm)	1/4 in
H4251X	100 ft (30.5 m)	1/4 in (6.4 mm)	1/4 in
H43803	3 ft (0.9 m)	3/8 in (9.5 mm)	3/8 in
H43806	6 ft (1.8 m)	3/8 in (9.5 mm)	3/8 in
H43810	10 ft (3.0 m)	3/8 in (9.5 mm)	3/8 in
H43825	25 ft (7.6 m)	3/8 in (9.5 mm)	3/8 in
H43850	50 ft (15.2 m)	3/8 in (9.5 mm)	3/8 in
H4381X	100 ft (30.5 m)	3/8 in (9.5 mm)	3/8 in
H45010	10 ft (3.0 m)	1/2 in (12.7 mm)	1/2 in
H45025	25 ft (7.6 m)	1/2 in (12.7 mm)	1/2 in
H45050	50 ft (15.2 m)	1/2 in (12.7 mm)	1/2 in
H4501X	100 ft (30.5 m)	1/2 in (12.7 mm)	1/2 in

Xtreme-Duty 5600 psi (386 bar)			
Part #	Length	Hose Diameter	Female NPSM
H52503	3 ft (0.9 m)	1/4 in (6.4 mm)	1/4 in
H52506	6 ft (1.8 m)	1/4 in (6.4 mm)	1/4 in
H52510	10 ft (3.0 m)	1/4 in (6.4 mm)	1/4 in
H52525	25 ft (7.6 m)	1/4 in (6.4 mm)	1/4 in
H52550	50 ft (15.2 m)	1/4 in (6.4 mm)	1/4 in
H5251X	100 ft (30.5 m)	1/4 in (6.4 mm)	1/4 in
H53803	3 ft (0.9 m)	3/8 in (9.5 mm)	3/8 in
H53806	6 ft (1.8 m)	3/8 in (9.5 mm)	3/8 in
H53810	10 ft (3.0 m)	3/8 in (9.5 mm)	3/8 in
H53825	25 ft (7.6 m)	3/8 in (9.5 mm)	3/8 in
H53850	50 ft (15.2 m)	3/8 in (9.5 mm)	3/8 in
H5381X	100 ft (30.5 m)	3/8 in (9.5 mm)	3/8 in
H55010	10 ft (3.0 m)	1/2 in (12.7 mm)	1/2 in
H55025	25 ft (7.6 m)	1/2 in (12.7 mm)	1/2 in
H55050	50 ft (15.2 m)	1/2 in (12.7 mm)	1/2 in
H5501X	100 ft (30.5 m)	1/2 in (12.7 mm)	1/2 in

Xtreme-Duty 7250 psi (500 bar)			
Part #	Length	Hose Diameter	Female NPSM
H72503	3 ft (0.9 m)	1/4 in (6.4 mm)	1/4 in
H72506	6 ft (1.8 m)	1/4 in (6.4 mm)	1/4 in
H72510	10 ft (3.0 m)	1/4 in (6.4 mm)	1/4 in
H72525	25 ft (7.6 m)	1/4 in (6.4 mm)	1/4 in
H72550	50 ft (15.2 m)	1/4 in (6.4 mm)	1/4 in
H7251X	100 ft (30.5 m)	1/4 in (6.4 mm)	1/4 in
H73803	3 ft (0.9 m)	3/8 in (9.5 mm)	3/8 in
H73806	6 ft (1.8 m)	3/8 in (9.5 mm)	3/8 in
H73810	10 ft (3.0 m)	3/8 in (9.5 mm)	3/8 in
H73825	25 ft (7.6 m)	3/8 in (9.5 mm)	3/8 in
H73850	50 ft (15.2 m)	3/8 in (9.5 mm)	3/8 in
H7381X	100 ft (30.5 m)	3/8 in (9.5 mm)	3/8 in
H75003	3 ft (0.9 m)	1/2 in (12.7 mm)	1/2 in
H75010	10 ft (3.0 m)	1/2 in (12.7 mm)	1/2 in
H75025	25 ft (7.6 m)	1/2 in (12.7 mm)	1/2 in
H75050	50 ft (15.2 m)	1/2 in (12.7 mm)	1/2 in
H7501X	100 ft (30.5 m)	1/2 in (12.7 mm)	1/2 in

3/4 Inch Hoses

- H67550 3/4 in x 50 ft (15.2 m), 6500 psi (448 bar, 44.8 MPa)
H77550 3/4 in x 50 ft (15.2 m), 7250 psi (500 bar, 50.0 MPa)

Heated Hoses – Reliable performance for plural-component sprayers

Heated hoses are designed for use with plural component high-pressure airless equipment, such as the Graco XP™ and XM™ plural component sprayers.



Safety Information

Remember to check your airless hose for kinks anywhere along its length. The hose should also be closely examined for splits, cracks or abrasions. Bulging anywhere on the hose or any amount of separation from the coupling could lead to hose failure and it should be replaced. For optimum hose life, never exceed the hose's rating for pressure and temperature.

Ordering Information

Water Jacketed Heated Hose (Approved for explosive atmospheres) 50 ft (15.2 m) sections

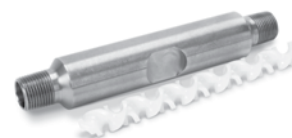
245840	Single hose, 1/4 in (6.3 mm), 5000 psi (345 bar, 34.5 MPa)
245841	Single hose, 1/4 in (6.3 mm), 7250 psi (500 bar, 50 MPa)
245842	Single hose, 3/8 in (9.5 mm), 5000 psi (345 bar, 34.5 MPa)
245843	Single hose, 3/8 in (9.5 mm), 7250 psi (500 bar, 50 MPa)
245844	Single hose, 1/2 in (12.7 mm), 5000 psi (345 bar, 34.5 MPa)
245845	Single hose, 1/2 in (12.7 mm), 7250 psi (500 bar, 50 MPa)
248118	Dual hose bundles, 1/2 in & 1/2 in (12.7 mm) 7250 psi (345 bar, 3.45 MPa)
248119	Dual hose bundles, 3/8 in & 3/8 in (9.5 mm) 7250 psi (345 bar, 3.45 MPa)
248120	Dual hose bundles, 1/2 in & 3/8 in (12.7 & 9.5 mm) 7250 psi (345 bar, 3.45 MPa)
248121	Dual hose bundles, 3/8 in & 1/4 in (9.5 & 6.3 mm) 7250 psi (345 bar, 3.45 MPa)

Electric Heated Hose (Not approved for explosive atmospheres), 5000 psi (345 bar, 34.5 MPa) 50 ft (15 m)

24P616	Hose heat control box. 1 zone, 230 VAC, 15A. Controls up to 200 ft of dual hose. Ref manual 310798.
15E750	Hose A, ID 1/4 in (6.3 mm) Dash 5 JIC fittings, (1/2-20 thread)
15E751	Hose A, ID 3/8 in (9.5 mm) Dash 5 JIC fittings, (1/2-20 thread)
15E752	Hose B, ID 3/8 in (9.5 mm) Dash 6 JIC fittings, (9/16-18 thread)
248907	Hose Set, ID 1/4(A) x 3/8(B) (6.3 x 9.5 mm) Dash 5 on "A", Dash 6 on "B"
248908	Hose Set, ID 3/8(A) x 3/8(B) (9.5 x 9.5 mm) Dash 5 on "A", Dash 6 on "B"

Static Mixing, 7250 psi (500 bar, 50 MPa)

248925	1/4 in x 12 ft (3.6 mm) whip hose mixing kit, includes (2) 15E592 housings and 6 mix chemicals
262478	Static mix housing kit, 1/2 in x 5 in (12 mm x 127 mm) 7250 psi. Uses 248927 mix elements
248927	25-pack, disposable, 1/2 in (12 mm), 12 element acetel sticks fit 15E592 housing
511352	Static mixer, 7250 psi (500 bar, 50.0 MPa), MxM, 3/8 npt x 9.5 in npt (9.5 mm x 241 mm), 12 welded set elements, SST



Protect your investment! Scuff Guard provides extra protection and prolongs the life of your hose. Available in two sizes and fabrications.

246078	Scuff Guard, 50 ft (15.2 m) braided polyester mesh. Blue 2.5 in nominal diameter
246456	Scuff Guard, 50 ft (15.2 m) polyethylene (6 mil) clear tubing 5 in diameter
16T138	Reusable Scuff Jacket with hook and loop fastener, 50 ft (15.2 m)

Pump Lowers

Pump Lowers - Built to last

With Graco's pump lowers, you can easily customize your sprayer for various coatings without purchasing an additional sprayer. Our quick knockdown pump lowers allow for easy maintenance and repair, reducing downtime so you can finish each job faster. The parts inside the lower are designed and tested for longevity and are proven to withstand more cycles than non-Graco pumps.



Ordering Information

Xtreme Lowers for Xtreme Sprayers

Part #	Output per cycle (cc)	Packing	Filter	Rod	Cylinder	Rebuild Kits*	Part #	Output per cycle (cc)	Packing	Filter	Rod	Cylinder	Rebuild Kits*
L085C1	85	Xseal_LTH	None	24B819	15F682	24F973	L180C3	180	Tuff-Stack (5)	None	24B822	197316	24F970
L085C2	85	Xseal_LTH	Built-In	24B819	15F682	24F973	L180C4	180	Tuff-Stack (5)	Built-In	24B822	197316	24F970
L085C3	85	Tuff-Stack (5)	None	24B819	15F682	262507	L220C1	220	Xseal_LTH	None	24B823	197317	24F967
L085C4	85	Tuff-Stack (5)	Built-In	24B819	15F682	262507	L220C2	220	Xseal_LTH	Built-In	24B823	197317	24F967
L115C1	115	Xseal_LTH	None	24B820	15F656	24F972	L220C3	220	Tuff-Stack (5)	None	24B823	197317	24F968
L115C2	115	Xseal_LTH	Built-In	24B820	15F656	24F972	L220C4	220	Tuff-Stack (5)	Built-In	24B823	197317	24F968
L115C3	115	Tuff-Stack (5)	None	24B820	15F656	262508	L250C1	250	Xseal_LTH	None	24B824	197318	24F965
L115C4	115	Tuff-Stack (5)	Built-In	24B820	15F656	262508	L250C2	250	Xseal_LTH	Built-In	24B824	197318	24F965
L145C1	145	Xseal_LTH	None	24B821	197315	24F971	L250C3	250	Tuff-Stack (5)	None	24B824	197318	24F966
L145C2	145	Xseal_LTH	Built-In	24B821	197315	24F971	L250C4	250	Tuff-Stack (5)	Built-In	24B824	197318	24F966
L145C3	145	Tuff-Stack (5)	None	24B821	197315	262510	L290C1	290	Xseal_LTH	None	24B825	197319	24F963
L145C4	145	Tuff-Stack (5)	Built-In	24B821	197315	262510	L290C2	290	Xseal_LTH	Built-In	24B825	197319	24F963
L180C1	180	Xseal_LTH	None	24B822	197316	24F969	L290C3	290	Tuff-Stack (5)	None	24B825	197319	24F964
L180C2	180	Xseal_LTH	Built-In	24B822	197316	24F969	L290C4	290	Tuff-Stack (5)	Built-In	24B825	197319	24F964

244849 Connection Kit. Includes tie rods and coupler to adapt Xtreme lower to King, Senator® or Bulldog® motors

* Includes seals for both old and new series filter caps.

Packings

Sprayer Packings – Optimize the performance of your pump

Packings play a critical role in optimizing spray performance by sealing pressure and holding material inside the pump. The tighter the seal, the better the performance. Graco packings feature two material constructions. UHMWPE (Ultra-high-molecular-weight polyethylene) is a durable, high-impact resistant material, used in such products as bulletproof safety vests. PTFE (Polytetrafluoroethylene) is a non-stick coating that can withstand extreme heat and is well-known for its use in cookware. Consult your manual for proper packing order.



Xtreme® Seals

Contains 3 UHMWPE and
2 leather packings

- Ideal for abrasive materials
- Standard in Graco Xtreme NXT Spray Packages



Tuff-Stack™

Contains 5 carbon-filled
PTFE packings

- Excellent for chemical resistance and high temperature applications
- Not ideal for abrasive materials
- Won't swell in solvent
- Won't stick to piston



X-Tuff®

Contains 3 UHMWPE and
2 carbon-filled PTFE packings

- Ideal for chemical resistance and durability in applications below 140°F (60°C)
- Standard in Graco XP™ Plural Component Spray Packages

Ordering Information

Repair Kits

Xtreme® Seals

Part #	Lower	Part #	Lower
24F973	85cc	24F967	220cc
24F972	115cc	24F965	250cc
24F971	145cc	24F963	290cc
24F969	180cc		

Tuff-Stack™

Part #	Lower	Part #	Lower
262504	36cc	262510	145cc
24F505	48cc	24F970	180cc
24F506	58cc	24F968	220cc
24F507	85cc	24F966	250cc
24F508	115cc	24F964	290cc

X-Tuff™

Part #	Lower	Part #	Lower
262786	36cc	262777	97cc
262787	48cc	262790	115cc
262774	54cc	262791	145cc
262788	58cc	262792	180cc
262775	72cc	262793	220cc
262789	85cc	262794	250cc
262776	90cc	262795	290cc

Repair Parts and Accessories

Xtreme NXT Sprayer Accessories



Part #	Description
288347	Hopper Feed Kit
255143	Wall-Mount Bracket
245132	Xtreme Floor-Stand Kit
NXT107	NXT Air Motor Valve – fits all three sizes
262230	External Air Controls for Lightweight Xtreme Package Carts
262231	External Air Controls for Heavy-Duty Xtreme Package Carts
NXT112	De-Ice Control Knob (5-Pack)
NXT102	De-Ice Control Repair Kit
NXT107	Replacement Poppet Valve Kit
181072	Round Suction Tube Strainer
191635	Tube Strainer
245176	Suction Kit, Replaces OEM Suction Assembly (6 ft, 1.8 m hose)
288687	Suction Kit, Wall Mount Version (10 ft, 3 m hose)
245136	55 gal (200 l) suction tube extension,
245190	Inlet Ball Spring Load Kit: 145cc, 180cc
245191	Inlet Ball Spring Load Kit: 220cc, 250cc, 290cc
245127	Carbide piston ball for 145 or 180 cc lower, 3-pack
244841	Lubricator – NXT Air Motor
206995	TSL, 1 qt (0.9 L)

DataTrak™



Graco's exclusive DataTrak control kit collects information about the performance of your Xtreme NXT sprayer, including pump diagnostics and material usage. It also offers protection against motor runaway in the event of a problem or accident.

NXT206	DataTrak Upgrade Kit for the NXT 2200
NXT306	DataTrak Upgrade Kit for the NXT 3400
NXT606	DataTrak Upgrade Kit for the NXT 6500

Pump Lower Fluid Filters



Fluid Filter Elements

Used with 85cc and 115cc:

236495	30 mesh (595 micron), 2-pack
238444	30 mesh (595 micron), 25-pack
236496	60 mesh (250 micron), 2-pack
238446	60 mesh (250 micron), 25-pack
236497	100 mesh (149 micron), 2-pack
238448	100 mesh (149 micron), 25-pack

Used with 145cc, 180cc, 220cc, 250cc, 290cc:

224458	30 mesh (595 micron), 2-pack
238436	30 mesh (595 micron), 25-pack
224459	60 mesh (250 micron), 2-pack
238438	60 mesh (250 micron), 25-pack
224468	100 mesh (149 micron), 2-pack
238440	100 mesh (149 micron), 25-pack

Filter Support

186075	Poly filter support
179801	Carbon steel filter support

Filter Cap Conversion Kit

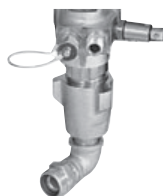
24F975	For 85-290cc lowers – Ref. manual 406882
--------	--



Ball Valves (Ref. manual 306861)*

102644	3000 psi (207 bar, 20.7 MPa) cs, inlet: 3/4 npt (f), outlet: 3/4 npt (f), PTFE seals, nylon seats
102646	3000 psi (207 bar, 20.7 MPa) cs, inlet: 1/2 npt (f), outlet: 1/2 npt (f), PTFE seals, nylon seats
218901	5000 psi (345 bar, 34.5 MPa) cs, inlet: 1/4 npsm (m), outlet: 3/4 unf (m), PTFE seals, JIC-8 outlet
239018	5000 psi (345 bar, 34.5 MPa) ss, inlet: 1/4 npt (m), outlet: 1/4 npt (m), PTFE seals, nylon seat
223959	5000 psi (345 bar, 34.5 MPa) cs, inlet: 3/8 npt (m), outlet: 1/4 npt (m), PTFE seals, nylon seats
248271	5000 psi (345 bar, 34.5 MPa) ss, inlet: 1/4 npt (m), outlet: 1/4 npt (m), PTFE seals, nylon seats
235992	5000 psi (345 bar, 34.5 MPa) ss, inlet: 3/8 npt (m), outlet: 1/4 npt (m), PTFE seals, nylon seats
238635	5000 psi (345 bar, 34.5 MPa) cs, inlet: 1/4 npt (m), outlet: 1/4 npt (m), fluoroelastomer seals, nylon seats
210659	5000 psi (345 bar, 34.5 MPa) cs, inlet: 1/4 npt (m), outlet: 3/8 npt (m), fluoroelastomer seals, nylon seats
214037	5000 psi (345 bar, 34.5 MPa) cs, inlet: 1/4 npt (m), outlet: 1/4 npt (m), PTFE seals, nylon seats
223960	5000 psi (345 bar, 34.5 MPa) cs, inlet: 3/8 npt (m), outlet: 3/8 npt (m), PTFE seals, nylon seats
210657	5000 psi (345 bar, 34.5 MPa) cs, inlet: 1/4 npt (m), outlet: 1/4 npt (m), fluoroelastomer seals, nylon seats
210658	5000 psi (345 bar, 34.5 MPa) cs, inlet: 3/8 npt (m), outlet: 3/8 npt (m), fluoroelastomer seals, nylon seats
262739	7250 psi (500 bar, 50 MPa) 1/2 in (13 mm) - with handle
262740	7250 psi (500 bar, 50 MPa) 1/2 in (13 mm) - no handle
237304	7400 psi (5105 bar, 515 MPa) cs, inlet: 3/8 npt (m), outlet: 3/8 npt (m), PTFE seals, PEEK seats
237303	7400 psi (5105 bar, 515 MPa) cs, inlet: 1/4 npt (m), outlet: 1/4 npt (m), PTFE seals, PEEK seats

*Repair kits also available, Ref. manual 406882



Inlet Strainers and Suction Tubes

245136	55 gal (200 l) suction tube extension kit
109534	Strainer suction-line, 3/8 npt (f), 20 mesh, sst
241576	Suction tube kit w/ 6 ft (1.8 m) hose. Xtreme sprayer kit
181072	Strainer, inlet, 1 in npsm (f), 8 mesh internal, 16 mesh external, SST. Fits Xtreme sprayer suction kit
249024	1 in (25 mm) inlet "Y" strainer kit (w/ball valve)
248970	3/4 in (19 mm) inlet "Y" strainer kit (w/ball valve)



Supply Pump Kits and Accessories

256276	5:1 hopper feed pump kit - for use with 20 gal (76 l) hoppers - Ref. manual 312769
256433	10:1 feed pump w/hose and regulator kit - Ref. manual 312769
248825	Monark® 5:1, with 10 ft (3.0 m) hose, regulator kit - Ref. manual 310863
248885	Monark 23:1, pail-mount, with 50 ft (15.3 m) hose - Ref. manual 310863
248826	Monark 23:1, wall or cart mount, with 50 ft (15.3 m) hose - Ref. manual 310863
256275	T2 2:1 hopper feed pump kit - for use with 20 gal (76 l) hoppers - Ref. manual 312769
295616	T2 transfer pump, 2.25:1, 5.0 gpm, (19 lpm) - Ref. manual 311882
246081	Complete T2 supply pump system, plural component - Ref. manual 311882
248829	Feed pump regulator kit - Ref. manual 310863



Repair Parts and Accessories



Elbow Fitting

100840	7500 psi (517 bar, 51.7 MPa), 1/4 npt (m), 1/4 npt (f), Street, 90
164259	7250 psi (500 bar, 50 MPa), 3/8 npt (m), 1/4 npt (f), Street, 90
155699	7250 psi (500 bar, 50 MPa), 3/8 npt (m), 3/8 npt (f), Street, 90
166999	7250 psi (500 bar, 50 MPa), 1/2 npt (m), 1/4 npt (f), Street, 90
158683	7400 psi (510 bar, 51 MPa), 1/2 npt (m), 1/2 npt (f), Street, 90



Elbow

100840	7250 psi (500 bar, 50 MPa), 1/2 npt (m), 1/2 npt (f), Street, 60
--------	--



Nipple

166606	7000 psi (483 bar, 48.3 MPa), 3/4 npt (m), 3/8 npt (m), 4 1/2 in, Reducing, hex
158979	7250 psi (500 bar, 50 MPa), 1/2 npt (m), 3/8 npt (m), 2 3/4 in, Reducing, hex
164672	7250 psi (500 bar, 50 MPa), 3/8 npt (m), 1/4 npsm, 1 3/8 in, Reducing, hex
156877	7250 psi (5010 bar, 50 MPa), 1/2 npt (m), 1/2 npt (m), 2 1/2 in, Reducing, hex
160790	7250 psi (500 bar, 50 MPa), 3/8 npt (m), 3/8 npt (m), 3 5/8 in, Reducing, hex
156849	7250 psi (500 bar, 50 MPa), 3/8 npt (m), 3/8 npt (m), 1 1/2 in, Reducing, hex
156850	7250 psi (500 bar, 50 MPa), 3/8 npt (m), 3/8 npt (m), 2 1/2 in, Reducing, hex
166846	7250 psi (500 bar, 50 MPa), 1/4 npt (m), 1/4 nps (m), Reducing, hex, SST
157129	7250 psi (500 bar, 50 MPa), 3/4 npt (m), 3/8 npt (m), 3 1/4 in, Reducing, hex
158491	7400 psi (510 bar, 51 MPa), 1/2 npt (m), 1/2 npt (m), 1 5/8 in, Reducing, hex
162449	7400 psi (510 bar, 51 MPa), 1/2 npt (m), 1/4 npt (m), 1 5/8 in, Reducing, hex
159239	7400 psi (510 bar, 51 MPa), 1/2 npt (m), 3/8 npt (m), 1 5/8 in, Reducing, hex
162453	7500 psi (517 bar, 51.7 MPa), 1/4 npt (m), 1/4 nps (m), 1 1/5 in, Reducing, hex
156971	7500 psi (517 bar, 51.7 MPa), 1/4 npt (m), 1/4 npt (m), 1 3/8 in, Reducing, hex
196181	7500 psi (517 bar, 51.7 MPa), 1/4 npt (m), 1/4 nps (m), 1 1/5 in, nickel plated, Reducing, hex
192593	8000 psi (552 bar, 55.2 MPa), 3/4 npt (m), 1/2 nps (m), 2 3/4 in, Reducing, hex, SST
164856	8000 psi (552 bar, 55.2 MPa), 3/8 npt (m), 1/4 npt (m), 1 5/8 in, Reducing, hex
165198	10000 psi (690 bar, 69 MPa), 3/8 npt (m), 1/4 npt (m), 1 3/4 in, Reducing, hex



Tee

15R875	7250 psi (500 bar, 50 MPa), 1/4 npt (m), 1/4 npt (f), 1/4 npt (f), (mxf) run (f) branch
15R874	7250 psi (500 bar, 50 MPa), 3/8 npt (m), 3/8 npt (f), 3/8 npt (f), (mxf) run (f) branch
15R873	7250 psi (500 bar, 50 MPa), 1/2 npt (m), 1/2 npt (f), 1/2 npt (f), (mxf) run (f) branch



Unions and Swivels

114339	5000 psi (345 bar, 34.5 MPa), (mxf), 1/4 npt (m), 1/4 npsm (f), SST
207152	7250 psi (500 bar, 50 MPa), (fxf), 3/8 npt (f), 3/8 npsm (f)
155865	7250 psi (500 bar, 50 MPa), (fxf), 1/2 npt (f), 1/2 npsm (f)
156684	7250 psi (500 bar, 50 MPa), (mxf), 1/2 npt (m), 1/2 npsm (f)
156173	7400 psi (510 bar, 51 MPa), (fxf), 3/8 npt (f), 3/8 npsm (f)
157705	7500 psi (517 bar, 51.7 MPa), (mxf), 1/4 npt (m), 3/8 npsm (f)
155665	7500 psi (517 bar, 51.7 MPa), (mxf), 3/8 npt (m), 3/8 npsm (f)
235208	7500 psi (517 bar, 51.7 MPa), (mxf), 3/8 npt (m), 3/8 npsm (f), SST
162505	7500 psi (517 bar, 51.7 MPa), (mxf), 3/8 npt (m), 1/2 npsm (f)
158256	7500 psi (517 bar, 51.7 MPa), (mxf), 1/2 npt (m), 3/8 npsm (f)
155570	10000 psi (690 bar, 69 MPa), (fxf), 1/4 npt (f), 1/4 npsm (f)
156823	10000 psi (690 bar, 69 MPa), (mxf), 1/4 npt (m), 1/4 npsm (f)
236987	Hose swivel, 7250 (500 bar, 50 MPa), (mxf) 1/4 npsm (m), 1/4 npsm (f), SST
189018	Gun swivel, 7500 psi (517 bar, 51.7 MPa), (mxf) 1/4 npsm (m), 1/4 npsm (f), nickel plated





Reducing Bushings

159841	7250 psi (500 bar, 50 MPa), 3/8 npt (m), 1/4 npt (f)
100206	7250 psi (500 bar, 50 MPa), 1/2 npt (m), 1/4 npt (f)
121433	7250 psi (500 bar, 50 MPa), 1/2 npt (m), 3/8 npt (f)



Coupling

113093	7250 psi (500 bar, 50 MPa), 1/4 npt (f), 1/4 npt (f)
162024	7250 psi (500 bar, 50 MPa), 3/8 npt (f), 3/8 npt (f)
158581	7250 psi (500 bar, 50 MPa), 1/2 npt (f), 1/2 npt (f)



Coupling Adapter

150286	7250 psi (500 bar, 50 MPa), 3/8 npt (m), 3/8 npt (f). Used for inlet of 15E592 mix tube.
15B729	7250 psi (500 bar, 50 MPa), 3/8 npt (f), 3/8 npsm (m)
150287	7250 psi (500 bar, 50 MPa), 3/8 npt (f), 1/4 npt (m)



Plug

100721	7250 psi (500 bar, 50 MPa), 1/4 npt, hex, socket, short
101754	7250 psi (500 bar, 50 MPa), 3/8 npt, hex, socket, short
100361	7250 psi (500 bar, 50 MPa), 1/2 npt, hex, socket, short



Hoppers

234097	7.5 gal (28 l) green fluid tank. Includes cover, seal, 1 in npt (m) outlet fitting
234017	7.5 gal (28 l) blue fluid tank. Includes cover, seal, 1 in npt (m) outlet fitting
255963	Hopper, double wall, 20 gal (76 l) - Ref. manual 312747
256257	Double wall 20 gal (76 l) hopper heater kit, 240V, includes 12 ft (3.6m) cable - Ref. manual 312747
256512	Desiccant kit-for use with 20 gal (76 l) hoppers, dries incoming air - Ref. manual 406739
256274	Twistork agitator kit - for use with 20 gal (76 l) hoppers - Ref. manual 312769



High Pressure Viscon® Fluid Heaters, Non-Hazardous Location

Ref. manual 309524

245867	120 VAC, 2300 watts, 19.2 amps
245868	200 VAC, 4000 watts, 20.0 amps
245869	240 VAC, 4000 watts, 16.7 amps
245870	480 VAC, 4000 watts, 8.3 amps
246276	380 VAC, 4000 watts, 10.5 amps



High Pressure Viscon Fluid Heaters, Hazardous Location

Ref. manual 309524

245848	120 VAC, 2300 watts, 19.2 amps
245862	200 VAC, 4000 watts, 20 amps
245863	240 VAC, 4000 watts, 16.7 amps
246254	380 VAC, 4000 watts, 10.5 amps
245864	480 VAC, 4000 watts, 8.3 amps



AMERICAS

MINNESOTA

Worldwide Headquarters
Graco Inc.
88 -11th Avenue N.E.
Minneapolis, MN 55413

MAILING ADDRESS

P.O. Box 1441
Minneapolis, MN 55440-1441
Tel: 612-623-6000 Fax: 612-623-6777

EUROPE

BELGIUM

Graco BVBA
Industrieterrein-Oude Bunders
Slakweidestraat 31
B-3630 Maasmechelen,
Belgium
Tel: 32 89 770 700 Fax: 32 89 770 777

ASIA PACIFIC

AUSTRALIA

Graco Australia Pty Ltd.
Suite 17, 2 Enterprise Drive
Bundoora, Victoria 3083
Australia
Tel: 61 3 9468 8500 Fax: 61 3 9468 8599

CHINA

Graco Hong Kong Ltd.
Shanghai Representative Office
Building 7
1029 Zhongshan Road South,
Huangpu District
Shanghai, 200011
The People's Republic of China
Tel: 86 21 649 50088 Fax: 86 21 649 50077

INDIA

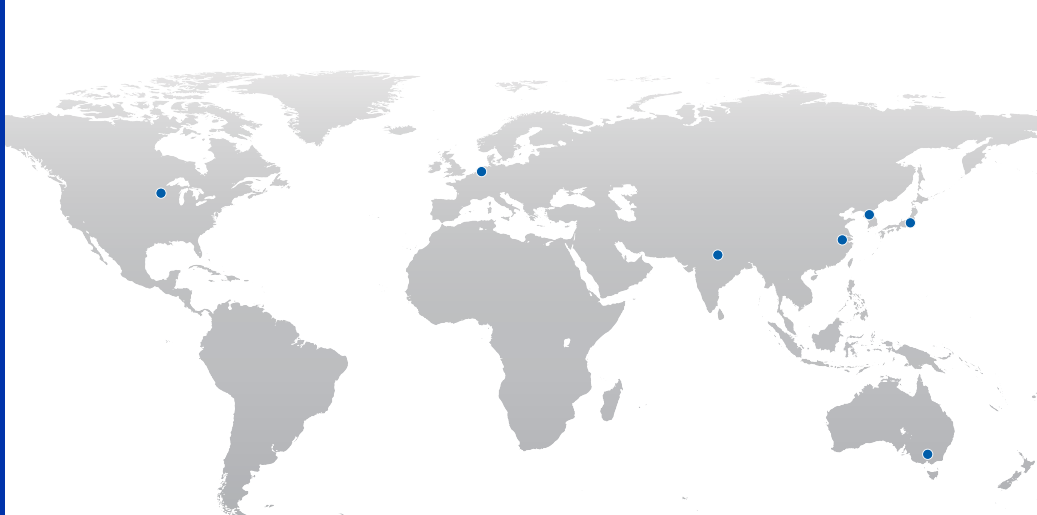
Graco India Private Limited
4th Floor
Augusta Point
Sector 53, Golf Course Road
Gurgaon, Haryana, India 122001
Tel: 91 124 435 4208 Fax: 91 124 435 4001

JAPAN

Graco K.K.
1-27-12 Hayabuchi
Tsuzuki-ku
Yokohama City, Japan 2240025
Tel: 81 45 593 7300 Fax: 81 45 593 7301

KOREA

Graco Korea Inc.
Shinhan Bank Building
4th Floor #1599
Gwanyang-Dong, Dongan-Ku,
Anyang-si, Korea 431-060
Tel: 82 31 476 9400 Fax: 82 31 476 9801



Graco Has You Covered

Facilities Worldwide for Global Support



Quality First

At Graco we pride ourselves on providing best-in-class products. Engineered solutions are manufactured in our own facilities, with the highest standards in the industry. We provide you with world-class customer support and expertise to help solve your application challenges.



Global Reach

Graco has facilities across the globe to provide you with the products and service you need, where you live. Plus, Graco has dedicated field experts in all areas of the world to support the products we sell.



Product Capabilities

Graco has a broad range of products that are engineered and tested to perform in the harshest environments so you can be certain your equipment is protected and working at peak performance.



Contact us today!

Call **866-361-5959** to talk with a Graco representative,
or visit www.graco.com for more information.

